



Drawing No.
G.A. 675/70/70/01

SKYVANE 675 PARAMETERS

	Int	Ext
Max blind width	5.0m	5.0m
Max blind drop standard operation	4.0m	3.0m
Max blind drop A/F operation	3.0m	2.0m
Max slat overhang	0.2m	0.15m
Max rack arm centres	1.2m	1.0m
Max fixing centres	1.5m	1.2m
Max area gearbox control	20m ²	15m ²
Max area motor control (linked blinds on width)	40m ²	30m ²

SPECIFICATION

Manufacture and Reference: Levolux ... system supplied and installed by Levolux Limited. Info@levolux.com

Description: Skyvane 675 and 675X Fully adjustable non-retractable louvre system with 75mm extruded aluminium slats.

Material: Aluminium extrusion of grade 6063 T6, with injection moulded heat and light stabilised Nylon 66 components. Slats roll formed from stove enameled 0.6mm aluminium.

Finish: Polyester powder coated to RAL...., average 60 microns/ anodised AA25 / mill finish / PVDF.

Dimensions: As shown on drawings.

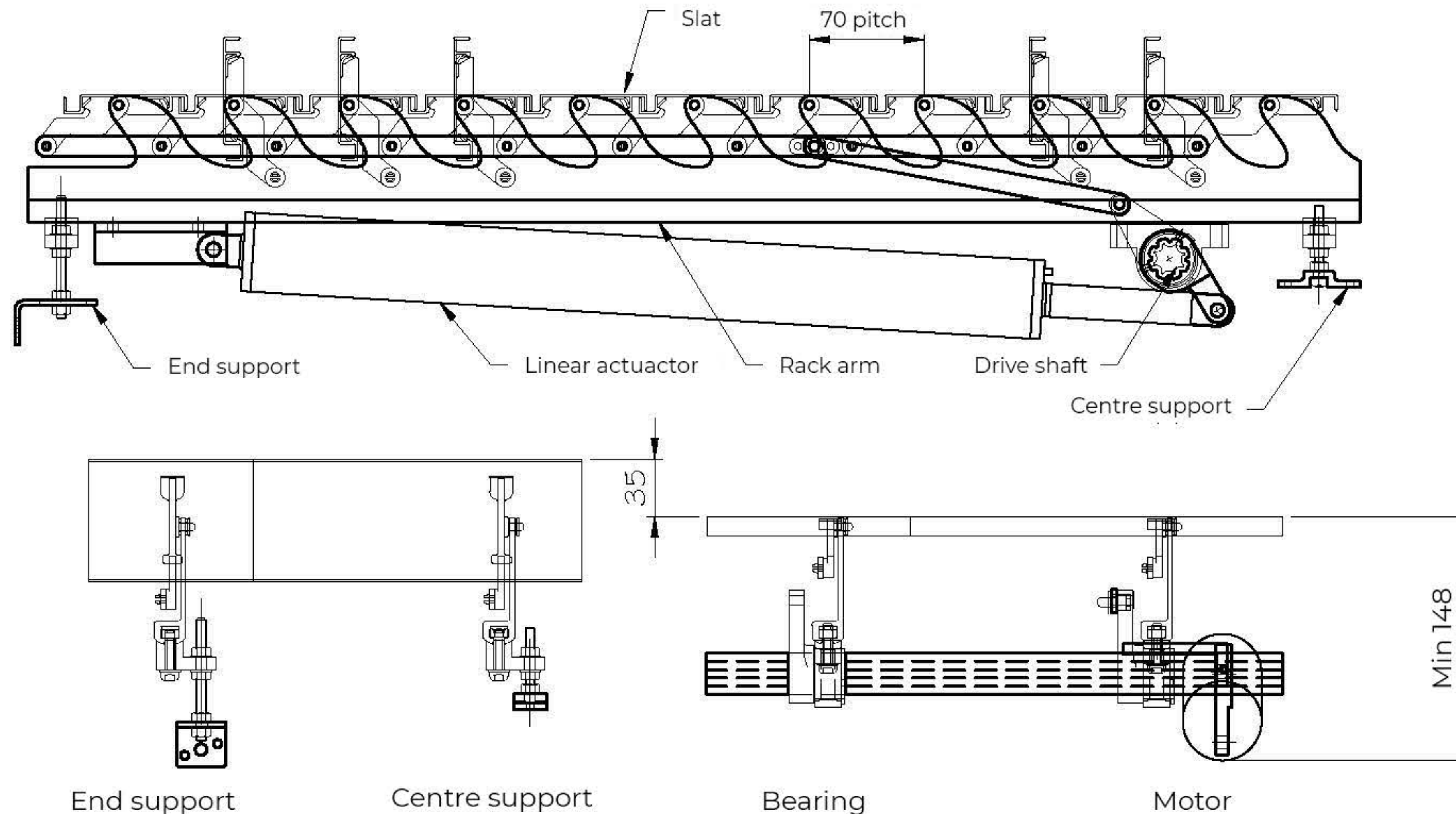
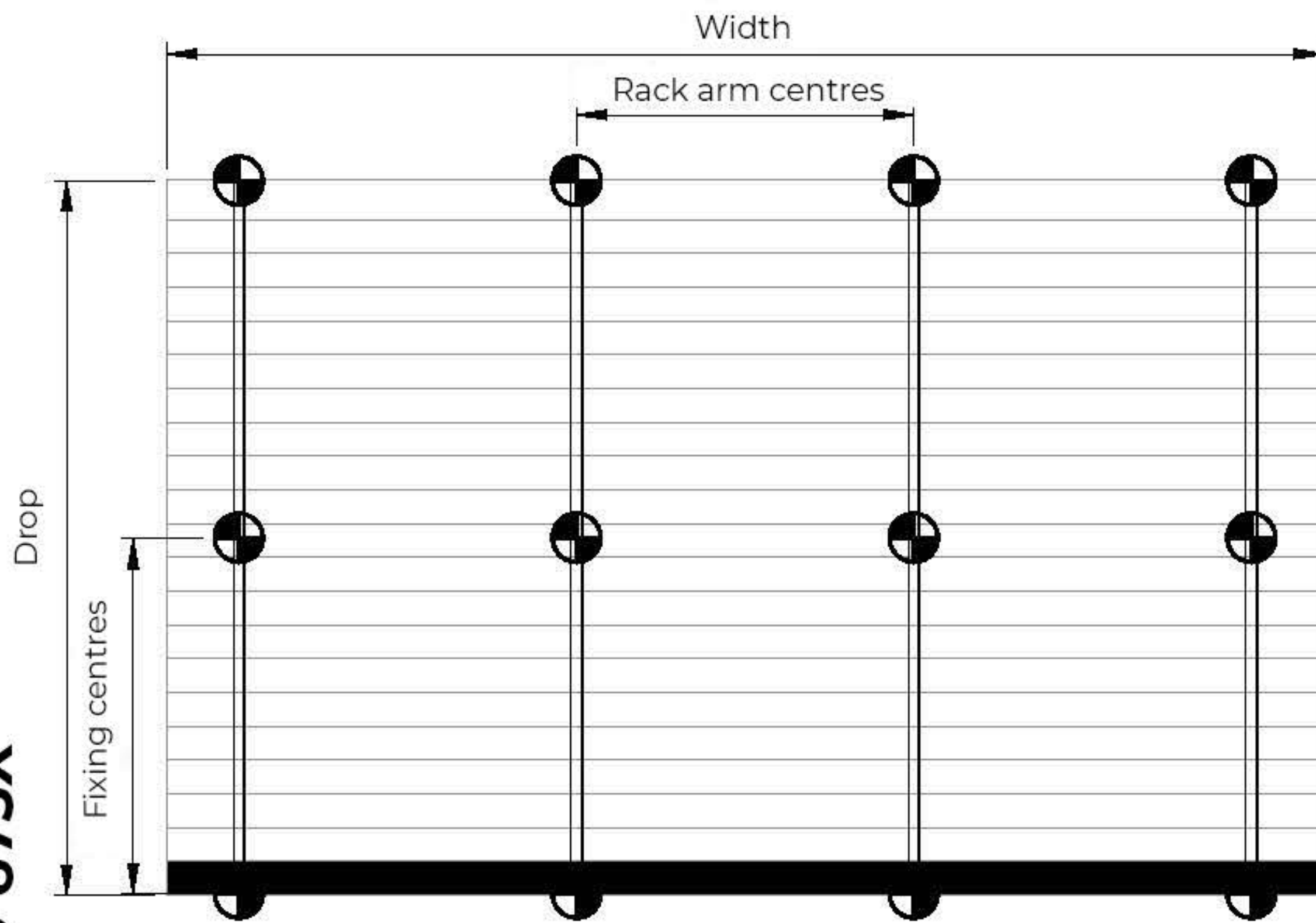
Fixing: As appropriate for glazing system

Operation:
 Manual gearbox with handwheel
 Manual gearbox with detachable handle
 Tubular electric motor and gearbox
 Linear actuator electric motor

Control systems: Motorised blinds can be switch operated, light controlled, fully automatic sun tracking system or integrated into BMS systems.

Notes: Perimeter baffles and brushes as required

SKYVANE 675 AND 675X



White House Works, Bold Road, St. Helens, Merseyside, United Kingdom, WA9 4JG. Telephone: St. Helens: 01744 648400 Harrow: 0208 863 9111 Gloucester: 01452 500007 Email: Info@levolux.com www.levolux.com