

LEVOLUX
SOLAR SHADING ■ BALCONIES ■ ARCHITECTURAL FACADES

Cl/SfB | 76.7

Drawing No.
G.A. 950-HP-50-01

Specification

Manufacture and Reference: Levolux VLS HP50 contour louvre system supplied and installed by Levolux Limited

Description: 50mm contoured ventilation louvre mounted on mullions fixed with adjustable stainless steel cleats. Interface between building and louvre to be extruded aluminium casements.

Blade pitch: 50mm

Material: Manufactured from extruded aluminium alloy 6063 T6.

Finish: Polyester powder coated to RAL...., average 60 microns / anodised AA25 / mill finish / PVDF.

Dimensions: As shown on drawings.

Performance: Louvres with mesh have an inlet CD of 0.29. Nominal free area of 52%
Spans vary according to mullion centres and design wind load

Weatherability: Class A up to 2.0m/s.


Fixing: To subcontractors details.

Accessories: Bird / insect mesh, blanking / insulated blanking plate to rear. Single / double doors.

Classification Nomenclature

Vent windspeed (m/s)	0	0.5	1.0	1.5	2.0	2.5	3.0	3.5
Class rating	A3	A3	A3	A3	A3	B3	C3	C3

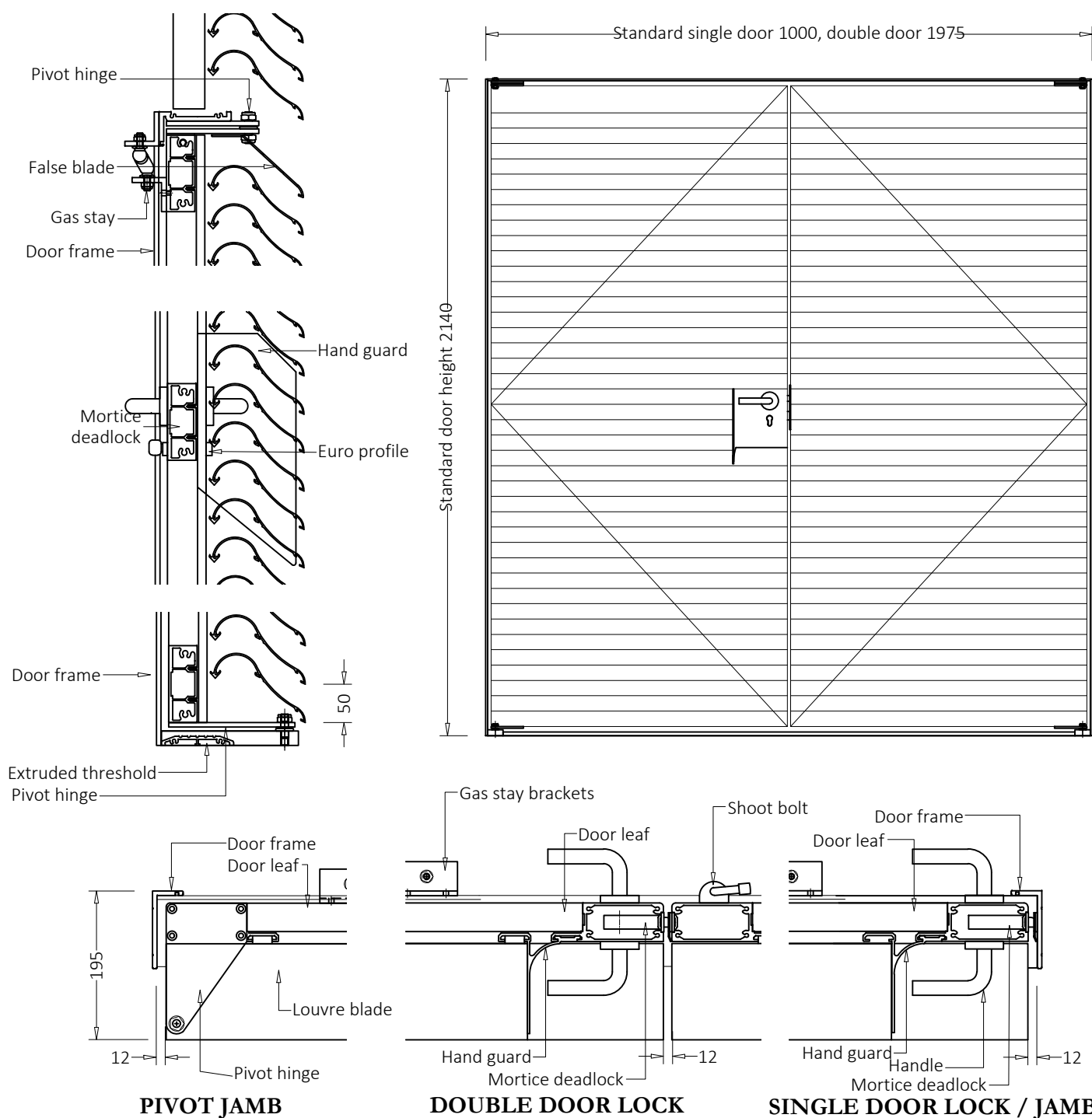
Results provided by Building Services Research and Information Association




LEVOLUX
SOLAR SHADING ■ BALCONIES ■ ARCHITECTURAL FACADES

Address: White House Works, Bold Road, St. Helens, Merseyside, United Kingdom, WA9 4JG
Telephone: St. Helens: 01744 648400 Harrow: 0208 863 9111 Gloucester: 01452 500007
Email: info@levolux.com Website: www.levolux.com
Registered in England No: 1834176

April 21





LEVOLUX
SOLAR SHADING ■ BALCONIES ■ ARCHITECTURAL FACADES

CI/SfB

76.7

Drawing No.

G.A. 950-HP-50-02

Specification

Manufacture and Reference: Levolux VLS50 HP50 contour louvre system supplied and installed by Levolux Limited.

Description: 50mm HP contoured ventilation louvre mounted on single/double high quality extruded aluminium doors designed with bespoke extrusions specifically for the purposes of louvres.

Blade pitch: 50mm

Material: Manufactured from extruded aluminium alloy 6063 T6.

Finish: Polyester powder coated to RAL.... , average 60 microns / anodised AA25 / mill finish / PVDF.

Dimensions: Standard door width; single 1000mm; double 1975mm by 2140mm high. Special sizes also available.

Performance: Louvres with mesh have an inlet CD of 0.29.

Fixing: To subcontractors details.


Standard ironmongery: Euro-profile mortice deadlock complete with single cylinder/thumb turn and escutcheons, gas stay and stainless steel/brass pivot hinges, shoot bolt to top and bottom on double doors.

Accessories: Bird / insect mesh, blanking / insulated blanking plate to rear, door closer. door seals and various locks.

Classification Nomenclature

Vent windspeed (m/s)	0	0.5	1.0	1.5	2.0	2.5	3.0	3.5
Class rating	A3	A3	A3	A3	A3	B3	C3	C3

Results provided by Building Services Research and Information Association



LEVOLUX
SOLAR SHADING ■ BALCONIES ■ ARCHITECTURAL FACADES

Address: White House Works, Bold Road, St. Helens, Merseyside, United Kingdom, WA9 4JG
Telephone: St. Helens: 01744 648400 Harrow: 0208 863 9111 Gloucester: 01452 500007
Email: info@levolux.com Website: www.levolux.com
Registered in England No: 1834176

April 21