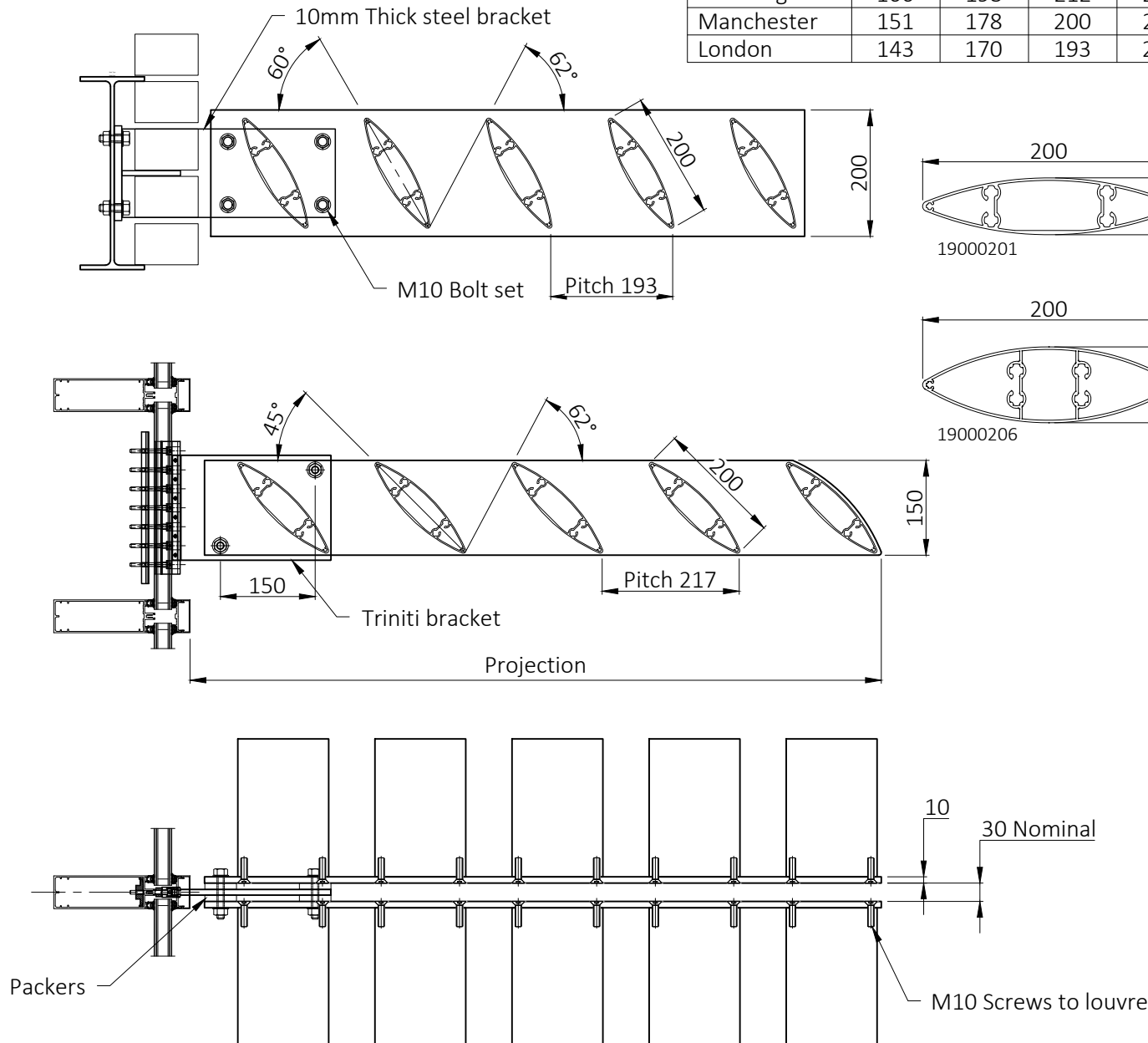


Louvre pitch for varying angles				
Angle	80°	70°	60°	45°
Edinburgh	166	193	212	232
Manchester	151	178	200	223
London	143	170	193	217



CI/SfB 76.7



Drawing No.

G.A.900/Aero/200/01

## Specification

**Manufacture and Reference:** Levolut 900 aerofoil solar shading system supplied and installed by Levolut Limited.

**Description:** Extruded aluminium aerofoil louvre blade 200x45 or 200x60mm fixed between side plates.

**Material:** System manufactured from 6000 series aluminium alloys.

**Fire Classification:** The Classification of aluminium used in construction products for reaction to fire is Class A1 without test (as EU Directive 96/603/EC).

The polyester powder coating has a classification for reaction to fire of A2, s1-d0 according to BS EN 13501-1:2018.

**Finish:** Polyester powder coated to RAL...., average 60 microns / anodised AA25 / mill finish / PVDF.

**Dimensions:** As shown on drawings.

**Spans:** Maximum spans vary with wind-load and building design and are limited to 1:150 deflection to span ratio.

Load	Maximum Span	
	200x45	200x60
0.9kN/m <sup>2</sup>	3500mm	4100mm
1.2kN/m <sup>2</sup>	3000mm	3700mm
1.5kN/m <sup>2</sup>	2800mm	3400mm

**Performance:** Louvres to be angled and pitched to eliminate direct sunlight through the louvre screen, or to meet aesthetic requirements.

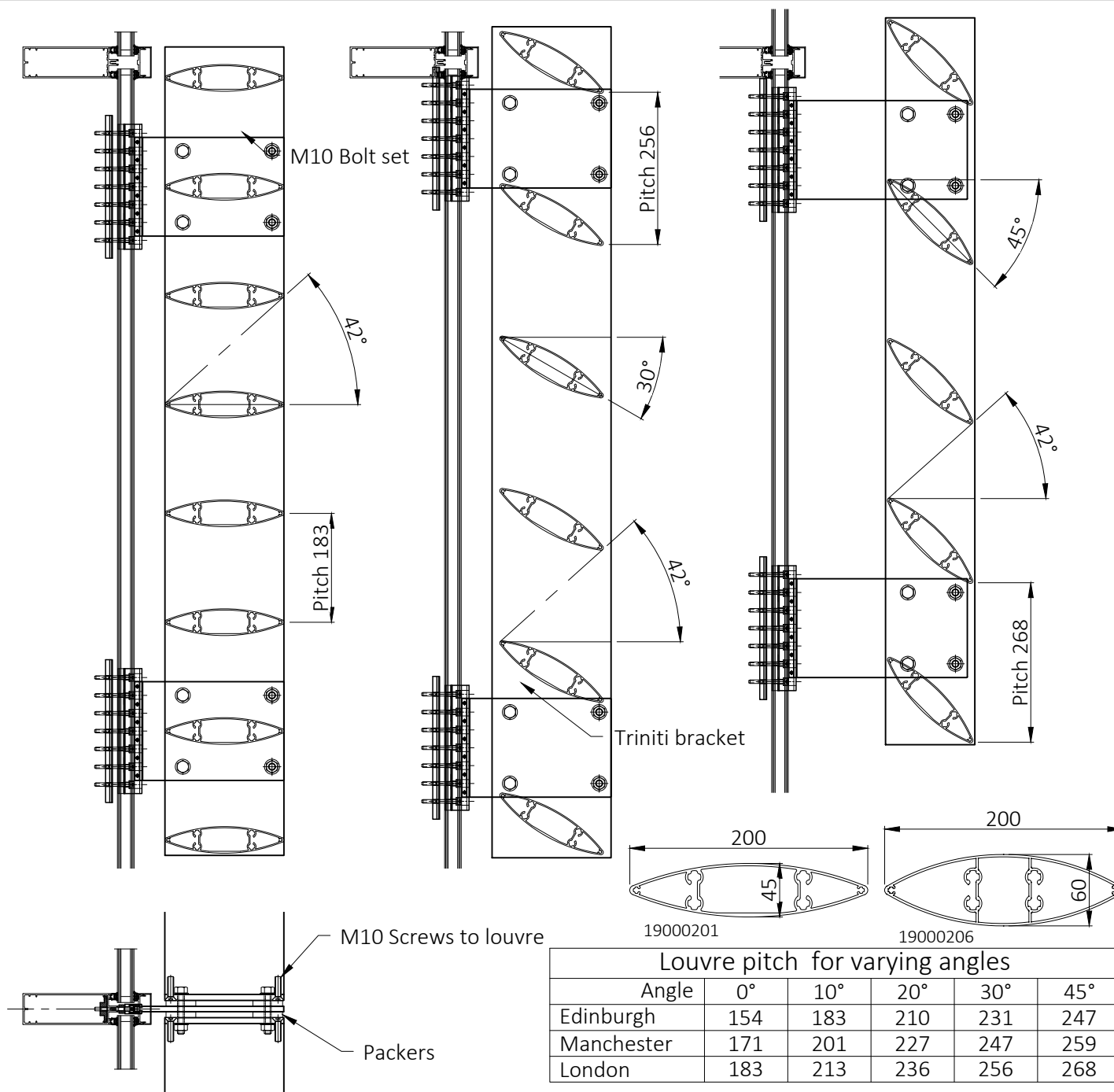
**Fixing:** To subcontractors details. A wide range of stainless, galvanised steel or aluminium fixing brackets are available for different fixing grounds, including thermally broken curtain walling brackets.

**Maintenance:** Aluminium is corrosion resistant and virtually maintenance free, requiring only periodic cleaning using a solution of mild detergent in warm water with soft cloth or sponge.

**Environmental Friendly:** Aluminium is 100% recyclable.



Address: White House Works, Bold Road, St. Helens, Merseyside, United Kingdom, WA9 4JG  
 Telephone: St. Helens: 01744 648400 Harrow: 0208 863 9111 Gloucester: 01452 500007  
 Email: [info@levolut.com](mailto:info@levolut.com) Website: [www.levolut.com](http://www.levolut.com)  
 Registered in England No: 1834176



## Specification

**Manufacture and Reference:** Levolux 900 aerofoil solar shading system supplied and installed by Levolux Limited.

**Description:** Extruded aluminium aerofoil louvre blade 200x45 or 200x60mm fixed between side plates.

**Material:** System manufactured from 6000 series aluminium alloys.

**Fire Classification:** The Classification of aluminium used in construction products for reaction to fire is Class A1 without test (as EU Directive 96/603/EC).

The polyester powder coating has a classification for reaction to fire of A2, s1-d0 according to BS EN 13501-1:2018.

**Finish:** Polyester powder coated to RAL...., average 60 microns / anodised AA25 / mill finish / PVDF.

**Dimensions:** As shown on drawings.

**Spans:** Maximum spans vary with wind-load and building design and are limited to 1:150 deflection to span ratio.

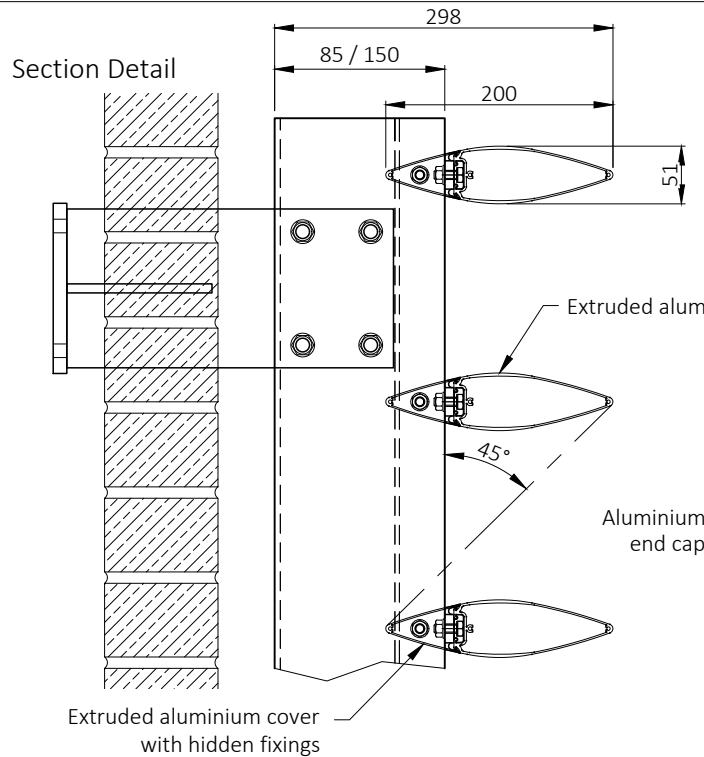
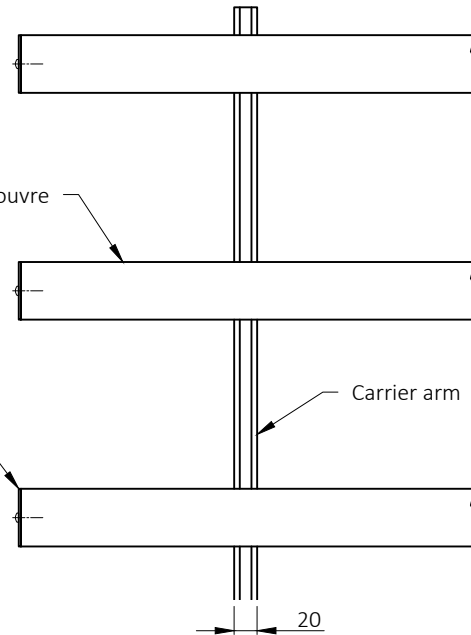
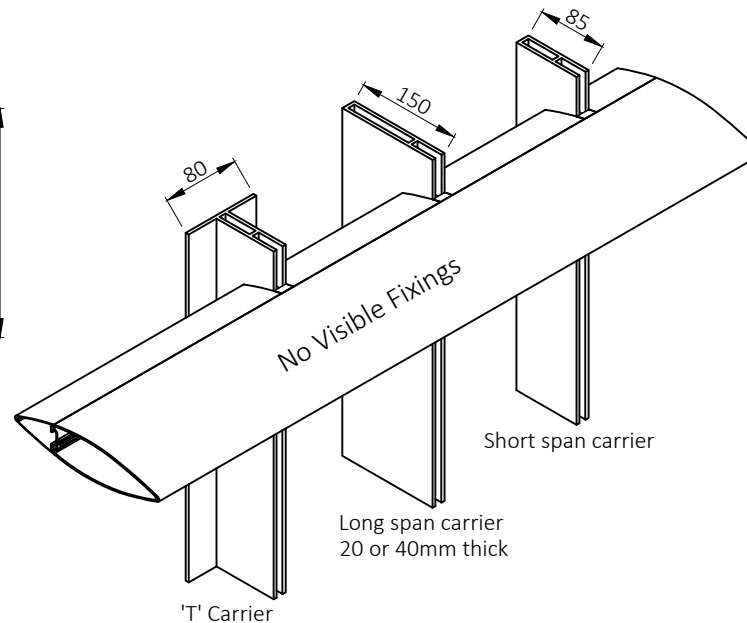
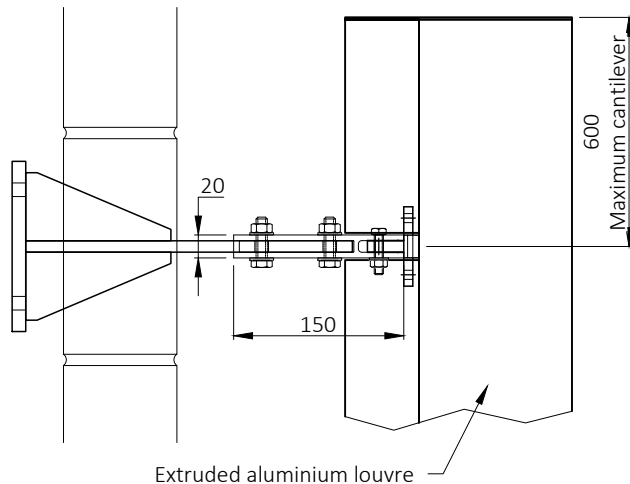
Load	Maximum Span	
	200x45	200x60
0.9kN/m <sup>2</sup>	3500mm	4100mm
1.2kN/m <sup>2</sup>	3000mm	3700mm
1.5kN/m <sup>2</sup>	2800mm	3400mm

**Performance:** Louvres to be angled and pitched to eliminate direct sunlight through the louvre screen, or to meet aesthetic requirements.

**Fixing:** To subcontractors details. A wide range of stainless, galvanised steel or aluminium fixing brackets are available for different fixing grounds, including thermally broken curtain walling brackets.

**Maintenance:** Aluminium is corrosion resistant and virtually maintenance free, requiring only periodic cleaning using a solution of mild detergent in warm water with soft cloth or sponge.

**Environmental Friendly:** Aluminium is 100% recyclable.

**Elevation Detail****Plan Detail**

CI/SfB 76.7

**Drawing No.**

G.A.920/Infin/200/01

**Specification**

Manufacturer and reference: Levolux 920 Infiniti aerofoil solar shading system supplied and installed by Levolux Limited.

Description: Extruded aluminium continuous appearance aerofoil louvre blade 200mm wide fixed across carrier arm with hidden fixings to blade.

Material: System manufactured from 6000 series extruded aluminium alloys and 316 grade cast stainless steel.

Fire Classification: The Classification of aluminium used in construction products for reaction to fire is Class A1 without test (as EU Directive 96/603/EC).

The polyester powder coating has a classification for reaction to fire of A2, s1-d0 according to BS EN 13501-1:2018.

Finish: Polyester powder coated to RAL ... , average 60 microns / anodised AA25/mill finish/PVDF.

Dimensions: As shown on drawings.

Spans: Maximum spans vary with wind-load and building design and are limited to 1:150 deflection to span ratio.

Load	Maximum Span	Maximum Cantilever
0.9kN/m <sup>2</sup>	3100mm	600mm
1.2kN/m <sup>2</sup>	2850mm	550mm
1.5kN/m <sup>2</sup>	2650mm	500mm

Performance: Louvres to be angled and pitched to eliminate direct sunlight through the louvre screen above 45°, or to suit aesthetic requirements.

Fixing: To subcontractors details. A wide range of stainless, galvanised steel or aluminium fixing brackets is available for different fixing grounds including a thermally broken curtain wall bracket.

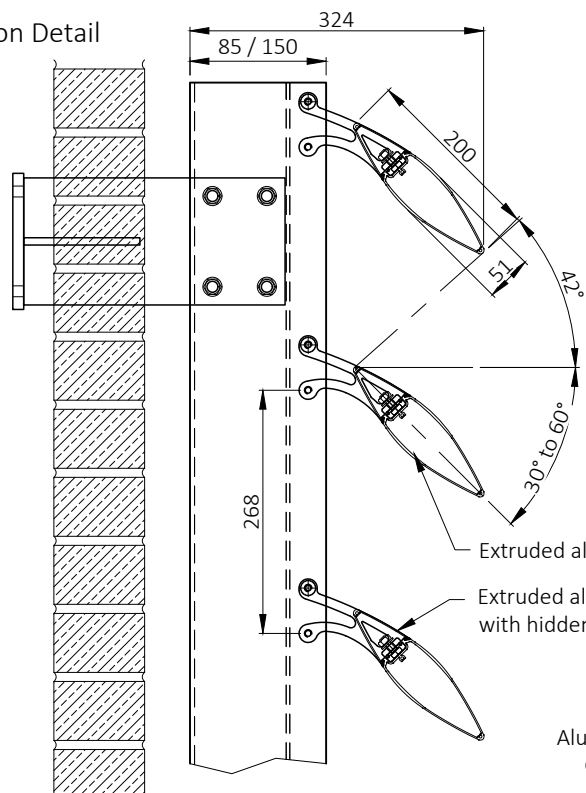
Maintenance: Aluminium is corrosion resistant and virtually maintenance free, requiring only periodic cleaning using a solution of mild detergent in warm water with soft cloth or sponge.

Environmental Friendly: Aluminium is 100% recyclable.

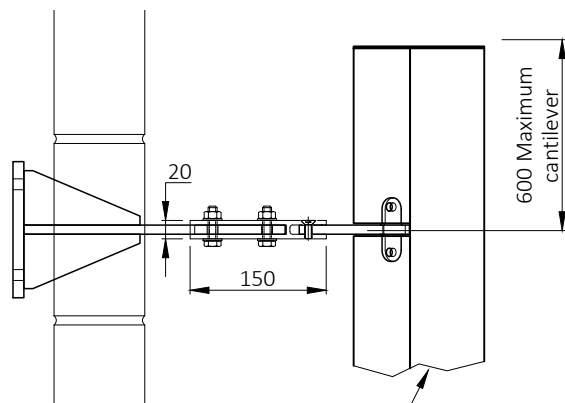


Address: White House Works, Bold Road, St. Helens, Merseyside, United Kingdom, WA9 4JG  
 Telephone: St. Helens: 01744 648400 Harrow: 0208 863 9111 Gloucester: 01452 500007  
 Email: [info@levolux.com](mailto:info@levolux.com) Website: [www.levolux.com](http://www.levolux.com)  
 Registered in England No: 1834176

Section Detail

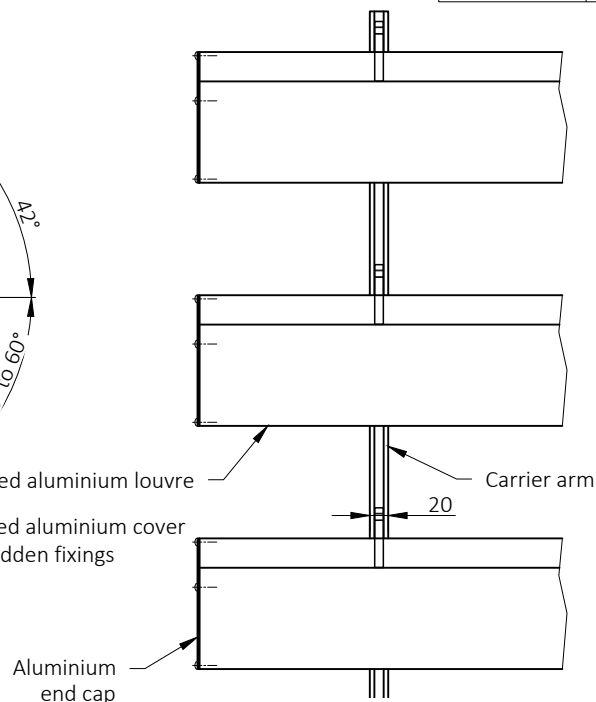


Plan Detail



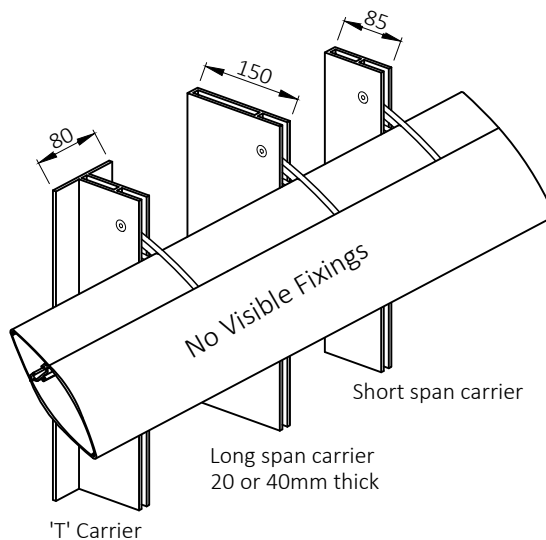
Extruded aluminium louvre

Elevation Detail



Aluminium end cap

Louvre pitch for varying angles			
Angle	30°	45°	60°
Edinburgh	231	247	248
Manchester	247	259	257
London	256	268	263



CI/SfB 76.7

Drawing No.

G.A.920/Infin/200/02

## Specification

Manufacturer and reference: Levolux 920 Infiniti aerofoil solar shading system supplied and installed by Levolux Limited.

Description: Extruded aluminium continuous appearance aerofoil louvre blade 200mm wide fixed across carrier arm with hidden fixings to blade.

Material: System manufactured from 6000 series extruded aluminium alloys and 316 grade cast stainless steel.

Fire Classification: The Classification of aluminium used in construction products for reaction to fire is Class A1 without test (as EU Directive 96/603/EC).

The polyester powder coating has a classification for reaction to fire of A2, s1-d0 according to BS EN 13501-1:2018.

Finish: Polyester powder coated to RAL ... , average 60 microns / anodised AA25/mill finish/PVDF.

Dimensions: As shown on drawings.

Spans: Maximum spans vary with wind-load and building design and are limited to 1:150 deflection to span ratio.

Load	Maximum Span	Maximum Cantilever
0.9kN/m <sup>2</sup>	3100mm	600mm
1.2kN/m <sup>2</sup>	2850mm	550mm
1.5kN/m <sup>2</sup>	2650mm	450mm

Performance: Louvres to be angled and pitched to eliminate direct sunlight through the louvre screen above 45°, or to suit aesthetic requirements.

Fixing: To subcontractors details. A wide range of stainless, galvanised steel or aluminium fixing brackets is available for different fixing grounds including a thermally broken curtain wall bracket.

Maintenance: Aluminium is corrosion resistant and virtually maintenance free, requiring only periodic cleaning using a solution of mild detergent in warm water with soft cloth or sponge.

Environmental Friendly: Aluminium is 100% recyclable.



Address: White House Works, Bold Road, St. Helens, Merseyside, United Kingdom, WA9 4JG  
 Telephone: St. Helens: 01744 648400 Harrow: 0208 863 9111 Gloucester: 01452 500007  
 Email: [info@levolux.com](mailto:info@levolux.com) Website: [www.levolux.com](http://www.levolux.com)  
 Registered in England No: 1834176